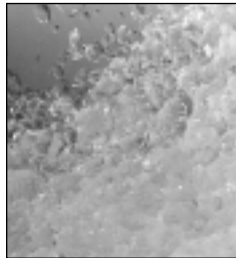
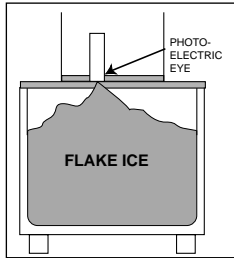




# Modular Air, Water, Remote Cooled Flake Ice Machine



**FLAKE ICE**  
Versatile, inexpensive to produce, used in salad bars, produce and fish displays.



**PHOTOELECTRIC EYE**  
For maximum bin storage, photoelectric eye turns machine off when ice level reaches chute.



**TOP BEARING**  
Extra large top bearing attached to auger and breaker reduces bearing wear.

ITEM NO.

## FME2400

The FME2400 represents Scotsman's commitment to R-404A Refrigerant (DuPont SUVA® HP62) as the sensible permanent solution to the refrigerant issue.

### LONG SERVICE LIFE

- Evaporator, auger and breaker are all fabricated from durable stainless steel.
- Innovative "Interrupted Flight" auger design minimizes bearing loads.
- New gearmotor design includes heavy duty ball bearings.
- Large spherical top roller bearing self aligns, reducing bearing wear.

### ENHANCED RELIABILITY

- Advanced electronics eliminate mechanical switches and sensors.
- Electronic water level control prevents problems associated with water pressure fluctuations.
- Continuous length evaporator refrigerant tubing eliminates potential refrigerant leaks.

### IMPROVED EFFICIENCY

- Photoelectric eye bin control allows maximum storage in bin.
- Continuous ice making, no hot gas cycle, no water dump.
- Lower KWH usage per 100 lbs. of ice than cubers.

### LOWER SERVICE COSTS

- Most major components are accessible from the machine front. Less repair time equals less repair costs.
- Installation made easy by placing all utility connections on back panel, accepting standard plumbing fittings.
- System design minimizes cost of component failure.

### VERSATILITY

- Fits a variety of Scotsman Ice Storage Bins – the modular design allows the user to choose the right bin for their needs.

### REMOTE CONDENSER

- Heat removed during icemaking is carried to the remote condenser directly by refrigerant. There the heat is transferred to the outdoor air, and the refrigerant returns to the icemaker.
- Fan motor operates from icemaker electrical supply.
- Choice of 25 foot or 40 foot precharged refrigerant.
- Line with easy to install quick connect couplings.

### ENVIRONMENTALLY RESPONSIBLE

- HFC R-404A refrigerant.
- Non-CFC foam insulation.

### WARRANTY PROTECTION

See Dealer for details of Limited Warranty.

- 24 Month Factory Labor.
- 24 Months on all parts.
- 5 Years on Compressor.
- Directory of Certified Dealer Service.

C.S.I. File No. 11400

This product qualifies for the following listings:

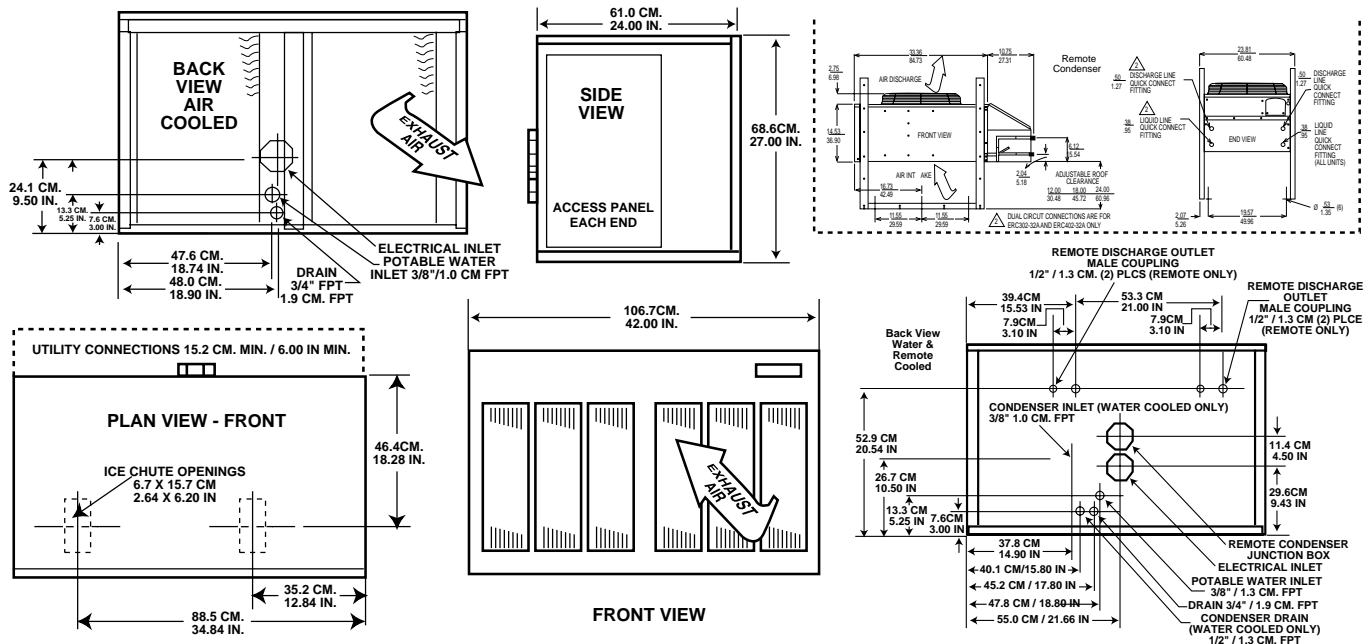


**SCOTSMAN®**  
Ice Systems The World Relies On.™

Consultant/Contractor Approval

775 CORPORATE WOODS PARKWAY • VERNON HILLS, IL 60061 • (847) 215-4550  
FAX (847) 913-9844  
E-mail: customer.service@scotsman-ice.com

Printed in U.S.A.  
3.5M 9-97



INSTALLATION NOTE: Allow 6" minimum space at back for ventilation and utility connections.

All models: Dimensions: W x D x H Unit: 42" x 24" x 27" Shipping Carton: 45 1/2" x 27 1/2" x 32"

Model	Cond. Unit	Ice Prod. Lbs./24 hrs.		Finish ***	Ship Wt. lbs./kg.	Basic Electrical Volts/Hz/Phase	No. of Wires	Min. Circuit Ampacity†	Max. Fuse Size or HACR Circuit Breaker	Power KWH/100 lbs.		Water Usage Gallons/100 lbs.			
		70° Air	90° Water							90°/70°	70°/50°F	Potable 90°/70°	Condenser 70°/50°F		
FME2400AE-32A	Air	2455	1800	EG	395/180	208-230/60/1	2	20.6	25	3.26	2.40	12	12	—	—
FME2400AE-3A	Air	2455	1800	EG	395/180	208-230/60/3	3	14.9	20	3.00	2.10	12	12	—	—
FME2400WE-32A	Water	2390	2020	EG	390/178	208-230/60/1	2	19.5	25	2.45	1.96	12	12	66	34
FME2400WE-3A	Water	2390	2020	EG	390/178	208-230/60/3	3	13.8	20	2.19	1.75	12	12	66	34
FME2400RE-32A	Remote	1960*	1780**	EG	425/194	208-230/60/1	2	23.1	30	3.40	2.51	12	12	—	—
FME2400RE-3A	Remote	1960*	1780**	EG	425/194	208-230/60/3	3	17.4	25	3.20	2.24	12	12	—	—

REMOTE CONDENSERS - Dimensions: W x D x H Unit: 45" x 22.12" x 29.25" Shipping Carton: 46.88" x 21.75" x 22.50"

Model	Cond. Unit	Finish	Ship Wt. lbs./kg.	Basic Electrical	No. of Wires	Min. Circuit Ampacity†	Max. Fuse Size or HACR Circuit Breaker	Power	Water Usage
ERC302-32A	Air	Galv.	110/50	208-230/60/1	2	2.6†	15	—	1-FME2400R

\*\*\* (EG) Grey, leathergrain embossed steel with high gloss baked enamel finish.  
 † Use this value to determine minimum wire size as per National Electric Code Standards.  
 ‡ Use value for remote condenser to determine wire size between icemaker and fan motor.  
 \* At 0° condenser temperature, 70° air temperature, 55° water temperature.  
 \*\* At 90° condenser temperature, 90° air temperature, 70° water temperature.

### TYPICAL ICE MAKING CAPACITY PER 24 HOURS

AIR TEMPERATURE	FME2400AE AIR-COOLED WATER TEMPERATURE				lbs. / kg.	FME2400WE WATER-COOLED WATER TEMPERATURE				lbs. / kg.
	F° / C°	50° / 10°	70° / 21°	90° / 32°		F° / C°	50° / 10°	70° / 21°	90° / 32°	
70° / 21°	2455 / 1114	2105 / 955	1790 / 812	1790 / 812	1815 / 823	2390 / 1084	2135 / 968	1815 / 823	1815 / 823	1815 / 823
90° / 32°	2040 / 925	1800 / 816	1590 / 721	1590 / 721	1775 / 805	2325 / 1055	2020 / 916	1775 / 805	1775 / 805	1775 / 805
100° / 38°	1980 / 898	1675 / 760	1540 / 699	1540 / 699	1715 / 778	2245 / 1018	1930 / 875	1715 / 778	1715 / 778	1715 / 778

Capacities represent typical production, variances of ±5% are normal.

### FME2400R REMOTE COOLED

TEMPERATURE	AMBIENT TEMPERATURE			ICE PRODUCTION
	COND. AIR	INDOOR	WATER	
LOW TEMPERATURE	F° / C° 0 / -17.8	70 / 21.1	55 / 12.8	1960 LBS. / 890 KG.
NORMAL TEMPERATURE	F° / C° 90 / 32.2	90 / 32.2	70 / 21.1	1780 LBS. / 808 KG.
HIGH TEMPERATURE	F° / C° 110 / 49.3	90 / 32.2	80 / 26.7	1500 LBS. / 681 KG.

### OPTIONAL PRE-CHARGED REFRIGERANT TUBE KITS:

RTE25: 25 foot pre-charged tubing with connectors — R-404A (HP62).

RTE40: 40 foot pre-charged tubing with connectors — R-404A (HP62).

OPTIONAL STORAGE BINS: BH800, BH900 with KBT14A bin top, and B90 and extension with KBT18 bin top.

OPTIONAL STAINLESS STEEL PANEL KIT: SPKFM42: Contains top, front, two end and service panels. Not factory installed.

### IMPORTANT OPERATING REQUIREMENTS:

Machine requires voltage indicated on rating name plate. Failures caused by improper voltage are not considered factory defects.

Scotsman's products are not designed for outdoor installations nor for installation where air temperatures fall below 50° F, or exceed 100° F; nor where water temperatures fall below 40° F, or exceed 100° F. Extended periods of operation at temperatures exceeding these limitations constitutes misuse under the terms of Scotsman Manufacturer's Limited Warranty, resulting in a loss of warranty coverage.

### FME SERIES FLAKE ICEMAKER

Model \_\_\_\_\_ flake icemaker manufactured by Scotsman Ice Systems. Production capacity to be \_\_\_\_\_ at 90°F air temperature and 70°F water temperature. Icemaker to have a \_\_\_\_\_ (air, water, remote air)-cooled condenser. To have factory installed photo-electric eye bin level control to automatically start and stop icemaker. Evaporator and auger to be constructed of stainless steel. Exterior cabinet to be \_\_\_\_\_ (baked enamel grey leathergrain or 304 series stainless steel) finish. Icemaker to be UL, CUL, NSF, and USDA listed.

We reserve the right to make product improvements at any time. Specifications and design are subject to change without notice. Scotsman ice systems include a full line of ice shapes, modular and self-storing cubers, flakers, drink dispensers, bins and accessories.